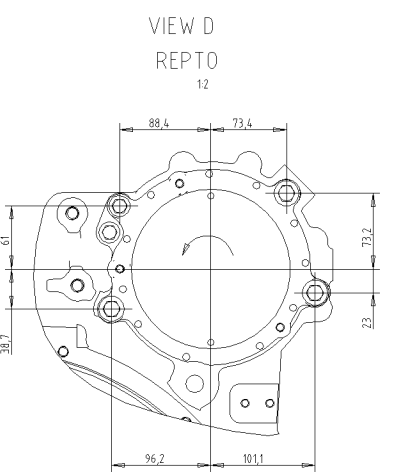
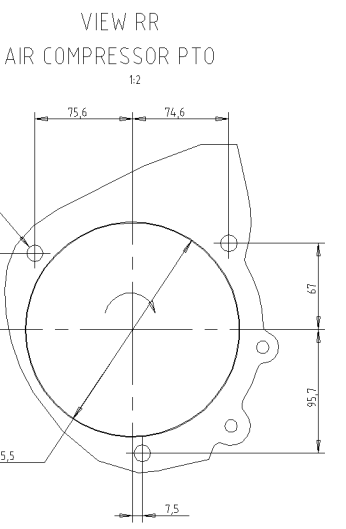
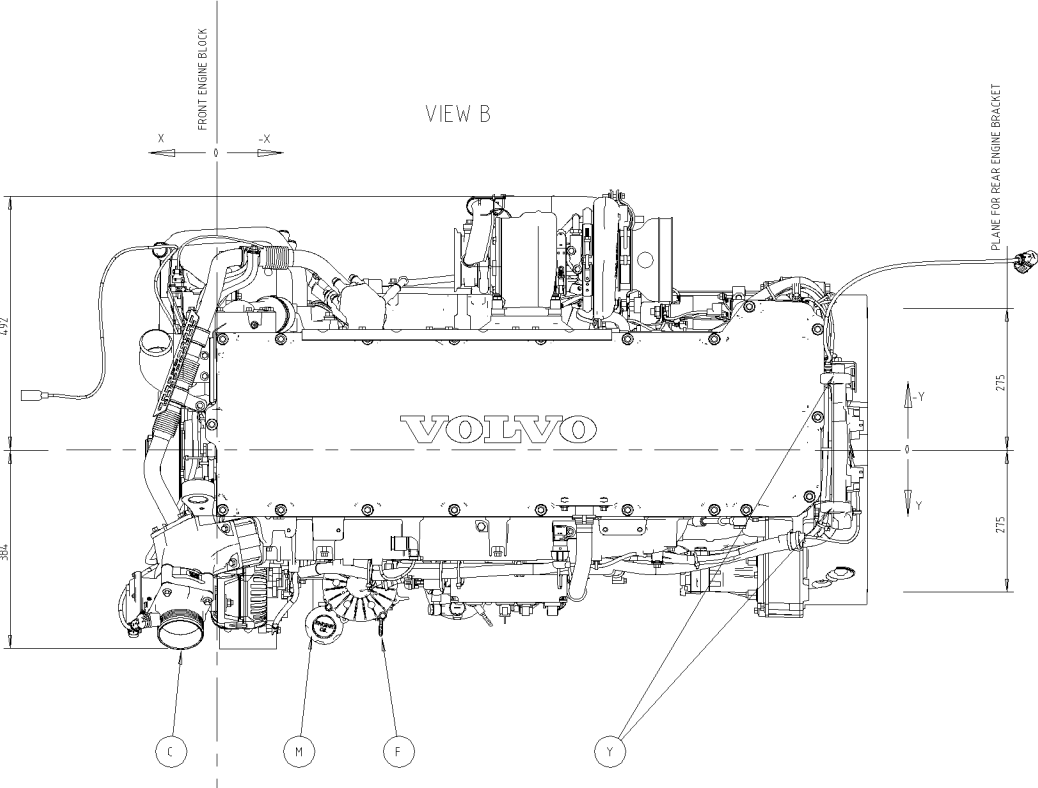
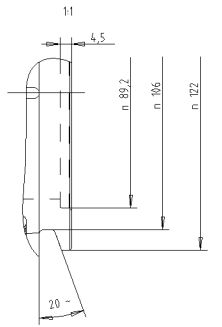


V-CLAMP TURBO CHARGER



POS	DESCRIPTION	X	Z	Y	NOTE
A	COOLANT FROM ENGINE HEATER	-1010	128	495	PIPE CONNECTION TO FIT n 22
B	COOLANT TO ENGINE HEATER	-194	-235	211	M18x1.5
C	CHARGE AIR FROM CAC	81	357	730	n 90
D	LIFTING EYE FRONT	4.7	74	677	
E	COOLANT DRAIN COOK	-470	-224	185	M22x1.5
F	OIL DIP STICK	-307	357	-33	
G	FUEL INLET	-402	227	167	n 9.5
F	FUEL INLET OPTIONAL				3/8" NPSF
H	FUEL RETURN	-522	-34.1	55	n 6.35
H	FUEL RETURN OPTIONAL				1/4" NPSF
I	AIR INTAKE	-796	-368	380	n 106
J	EXHAUST OUTLET	-449	-368	380	V-CLAMP n 122
K	COOLANT INLET	-191	-262	10	n 60
L	COOLANT OUTLET	129	-211	569	n 60
M	OIL FILLER CAP	-198	342	49	
N	OIL PRESSURE SENSOR	-735	107	198	EMS
O	COOLANT TEMP SENSOR	-61	-205	423	EMS
P	OPTIONAL SPEED SENSOR	-1162	250	117	M18x1.5 GEAR RATIO 1:1 153 TEETH
Q	FROM EXPANSION TANK	116	-389	511	n 28
R	CHARGE AIR TO CAC	-613	-446	149	n 90
S	AIR FILTER INDICATOR/ AMBIENT TEMP				
T	OIL DRAIN PLUG	-180	0	-437	M24x1.5
U	OIL TEMP SENSOR	-360	188	-178	EMS
V	CRANK CASE VENTILATION	-756	240	21	n 38
W	OIL TO AIR COMPRESSION	-781	126	162	M12x1.5
X	CONTROL UNIT				
Y	LIFTING EYE BACK LEFT	-1189	117	703	
Y	LIFTING EYE BACK RIGHT	-1189	-144	685	
Z	AIR VENT HOSE n 9.5 TO BE CONNECTED TO EXP. TANK	-62	-242	565	n 10
AA	COOLANT LEVEL SENSOR				FOR VOLVO PENTA EXPANSION TANK
BB	AUX REMOTE STOP, DIAGNOSIS AND ENGINE INTERFACE	-547	295	405	
CC	AUX STOP	-480	295	405	
DD	UREA HEATED INLET	-133	-399	167	INLET M14x1.5
DD	OUTLET	-234	-191	375	OUTLET M18x1.5
EE	CAB HEATER INLET	-119	-399	167	INLET M14x1.5
EE	OUTLET	-274	-191	375	OUTLET M18x1.5
FF	COOLANT TO COMPRESSOR	-940	-149	292	n 30
GG	COOLANT FROM COMPRESSOR	-110	-202	220	M22 x 1.5
TP	CENTRE OF GRAVITY	-614	11	210	

SCALE 1:5

DIMENSION DRAWING
 21983828
 03
 1111